

AT

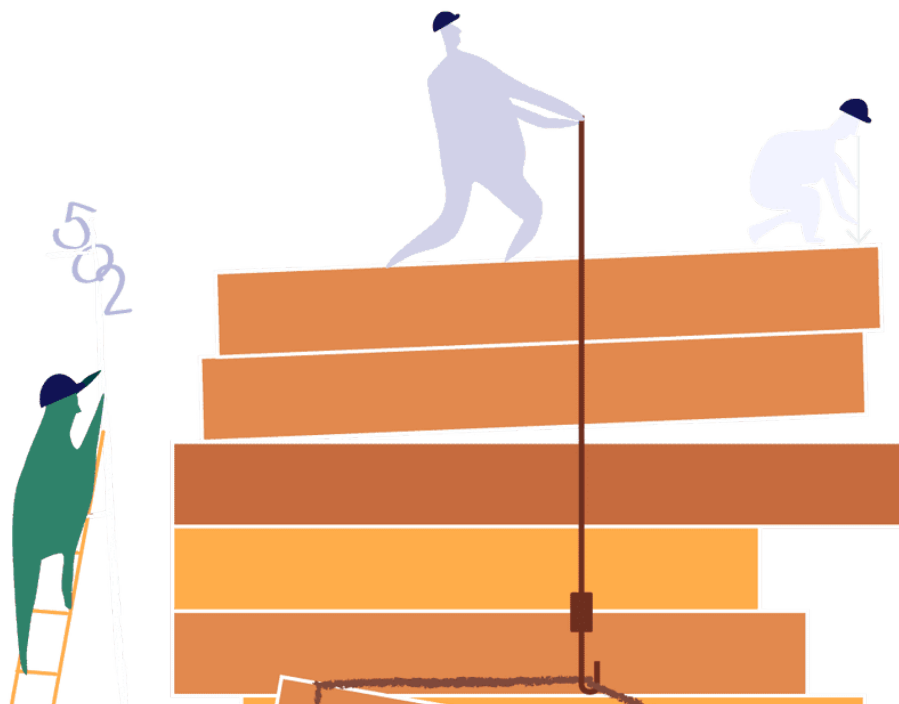
The COVID Racial Data Tracker

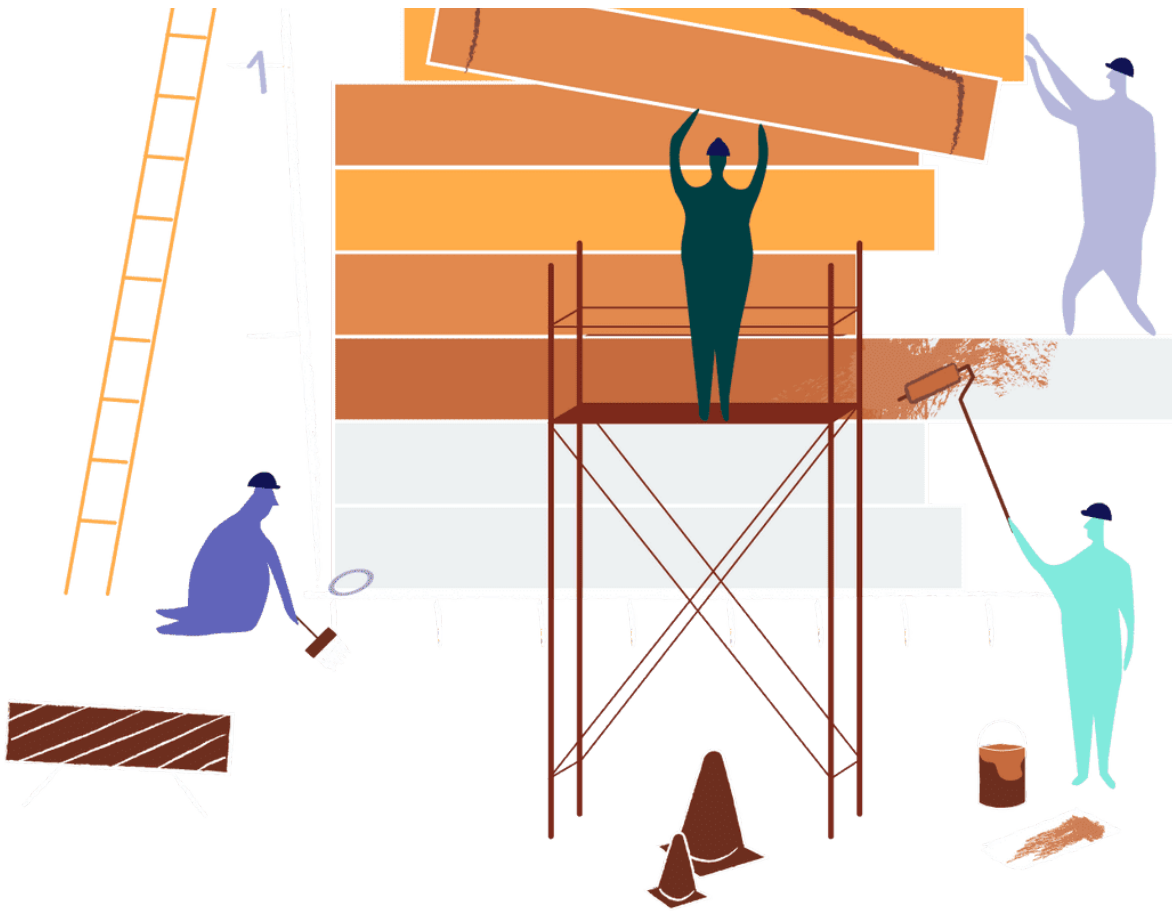
[Race & Ethnicity](#)[About](#)[Complete Dataset](#)

As of **March 7, 2021** we are no longer collecting new data. [Learn about available federal data.](#)

COVID-19 is affecting Black, Indigenous, Latinx, and other people of color the most.

The COVID Racial Data Tracker is a collaboration between the COVID Tracking Project and the Boston University Center for Antiracist Research. Together, we're gathering the most complete and up-to-date race and ethnicity data on COVID-19 in the United States.



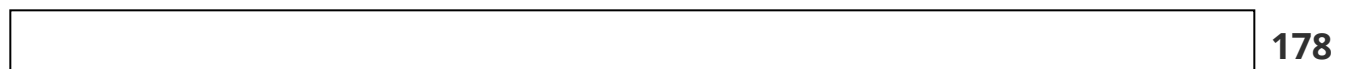


Júlia Ledur / COVID Tracking Project

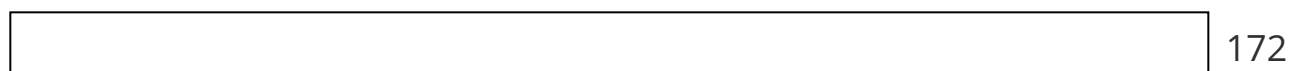
Nationwide, Black people have died at 1.4 times the rate of white people.

Deaths per 100,000 people by race or ethnicity through March 7, 2021

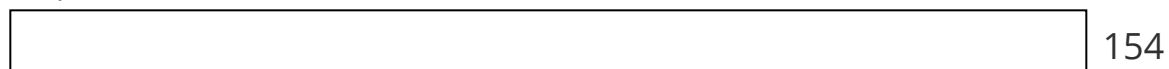
Black or African American



American Indian or Alaska Native



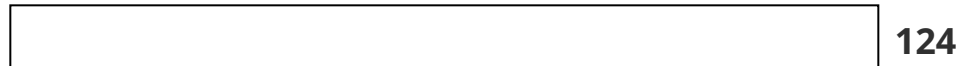
Hispanic or Latino



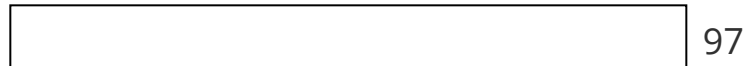
Native Hawaiian or Other Pacific Islander



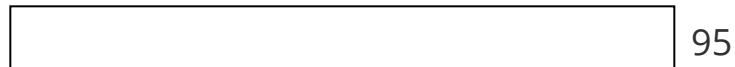
White



Other



Asian



Two or more races

[Notes ↓](#)

We've lost at least 73,462 Black lives to COVID-19 to date. Black people account for 15% of COVID-19 deaths where race is known.

We've asked every state to report complete race and ethnicity data. Our Racial Data Dashboard has the latest.

States and territories reporting race and ethnicity data

51 states/territories

Reporting positive cases

51 states/territories

Reporting deaths

[See the dashboard →](#)

[Get the complete dataset \(CSV\) →](#)

[Learn more about the tracker →](#)

Tracking inequity at the county level

State-level statistics tell part of the story, but many US states are also deeply segregated—meaning different counties in the same state can have vastly different breakdowns by race and ethnicity.

Race and ethnicity data for COVID cases isn't widely available at the county level, so we're using two numbers we do have: the latest infection and death rates for each county, from a *New York Times* dataset, paired with the largest racial or ethnic group in that county, based on the Census Bureau's 2019 ACS 5-Year estimates. The results are staggering.

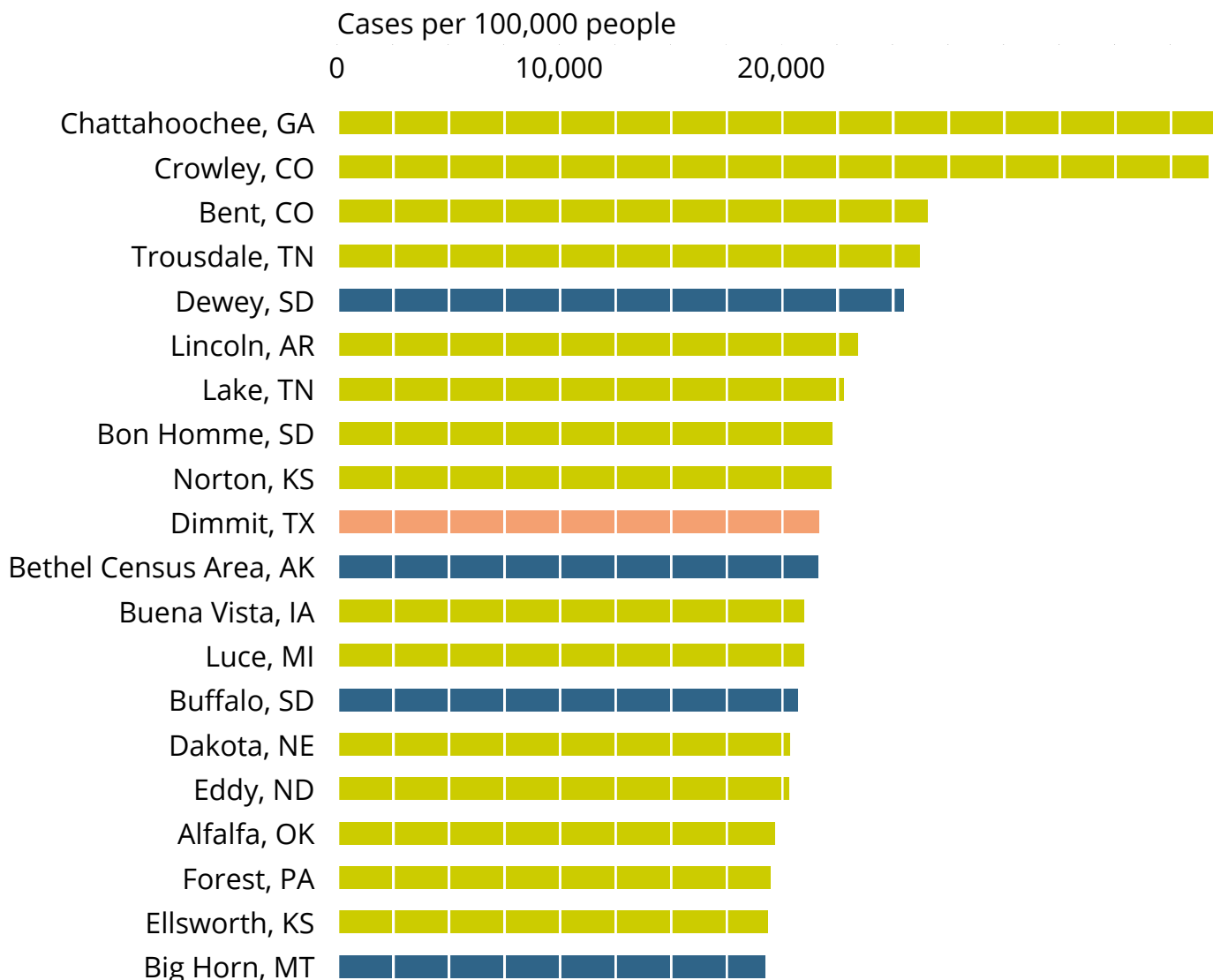
Counties with the 20 highest infection rates

Largest racial or ethnic group

White alone

American Indian and Alaskan Native alone

Hispanic or Latino



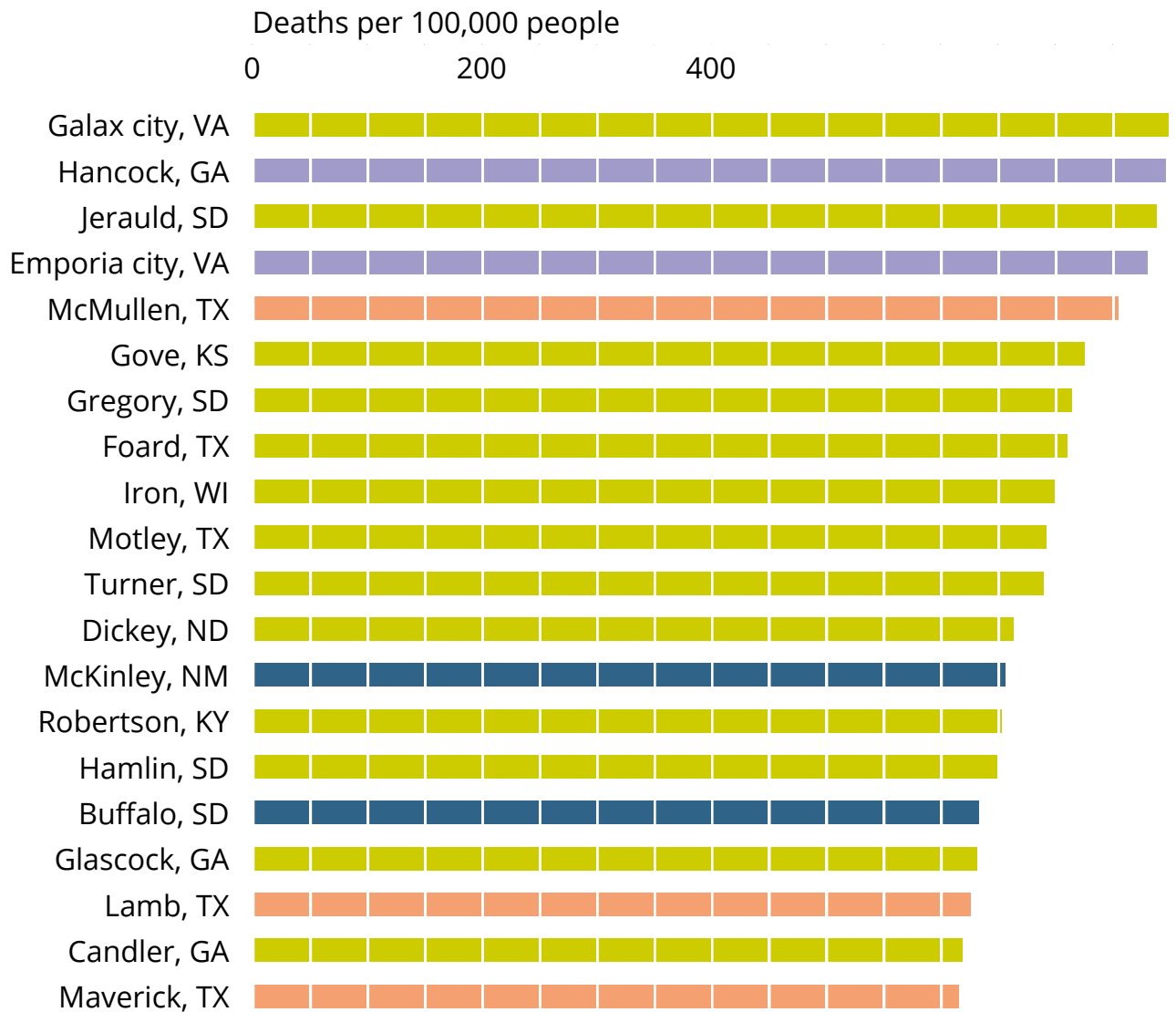
This chart shows the 20 counties with the highest level of infections per capita, and the largest racial or ethnic group in that county. Non-Hispanic White people represent the largest racial group in most of these counties. This is in line with Census statistics, which show that more than 60 percent of Americans are White, non-Hispanic or Latino.

Show chart data ↓

Counties with the 20 highest death rates

Largest racial or ethnic group

- White alone
- Black or African American alone
- Hispanic or Latino
- American Indian and Alaskan Native alone



When we look at the 20 counties with the highest level of deaths per capita, we see a different story. In two of these 20 counties, Black people represent the largest racial group. Two of the top five counties with the highest death rates in the nation are all predominantly Black.

Show chart data ↓

Learn more from media outlets across the country about how COVID-19 is impacting communities of color.

[The Virus Is Showing Black People What They Knew All Along](https://covidtracking.com/race)

The Atlantic • December 22, 2020

How COVID-19 Hollowed Out a Generation of Young Black Men

ProPublica • December 22, 2020



[Contact](#)

[RSS](#)

[About Us](#)

[Terms and Conditions](#)

[License](#)

[Privacy Policy](#)

[Accessibility](#)

[Sitemap](#)

The COVID Tracking Project collects and publishes the most complete data about COVID-19 in the US.

CovidTracking.com Copyright © 2021 by The Atlantic Monthly Group. (CC BY 4.0)